

PRODUCT MANUAL

SKU: B0108-01501BK

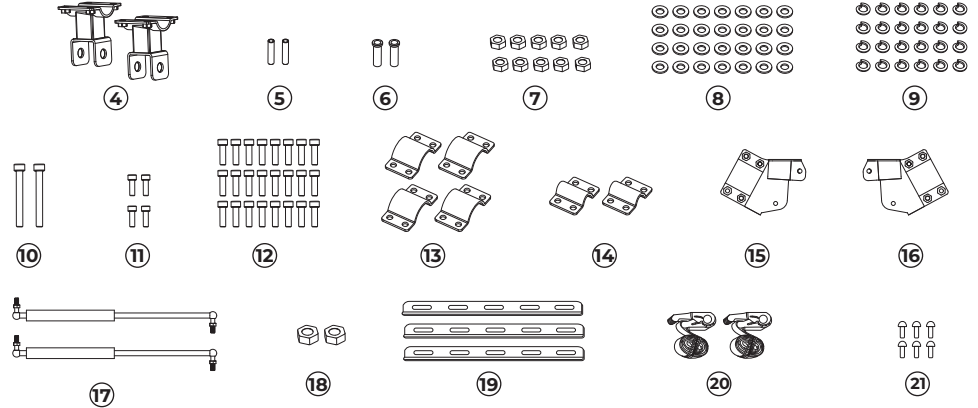
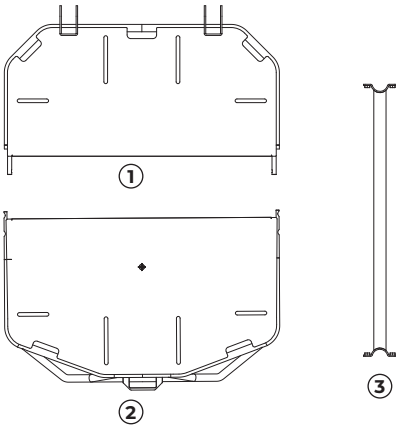
BEFORE YOU BEGIN

1. Read these instructions and check to be sure all parts and tools are accounted for.
2. Please retain these installation instructions for future reference and parts ordering information.

IMPORTANT

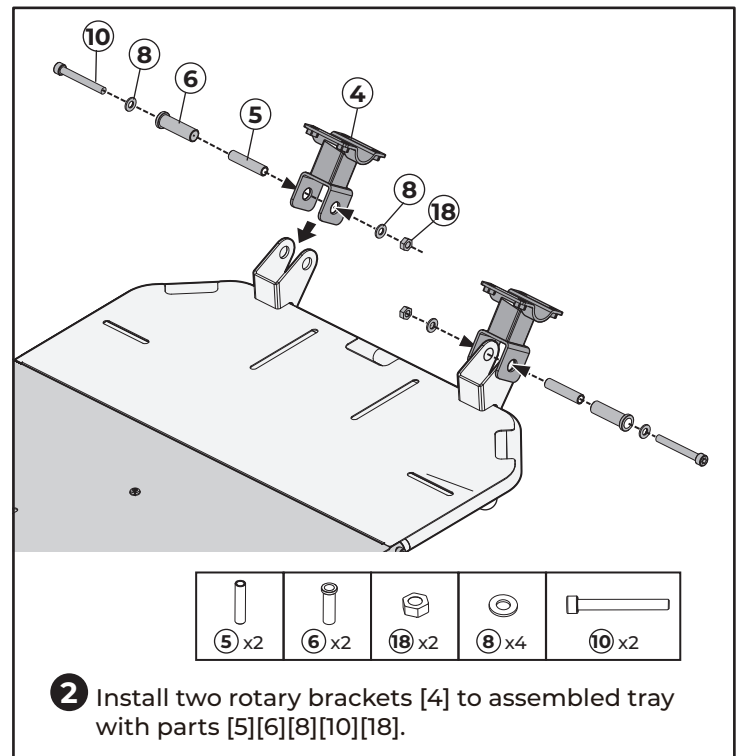
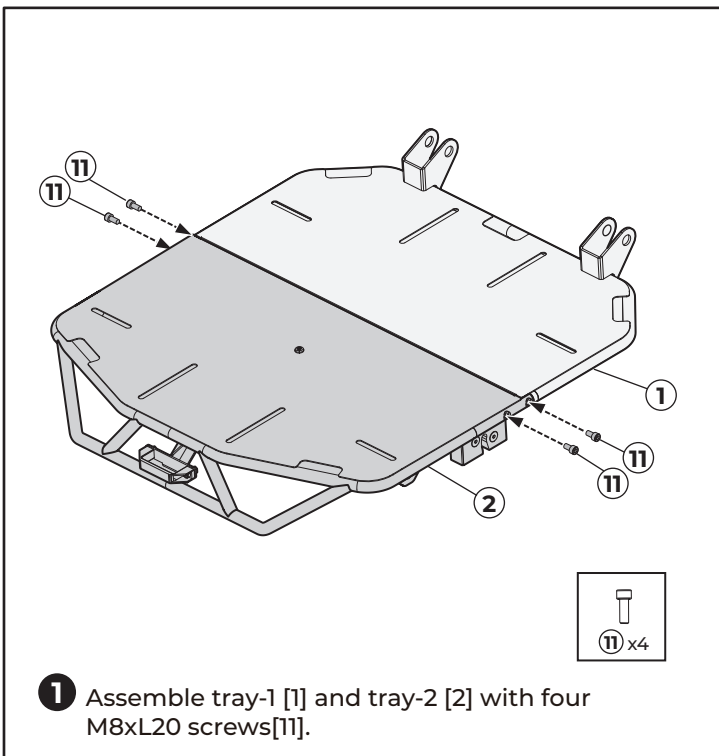
1. Please read the installation instructions carefully before you start.
2. If the vehicle is clean and free of other debris, it will be easy to install.
3. For your safety and to ensure a satisfactory installation, please complete all the installation steps in the order shown below.

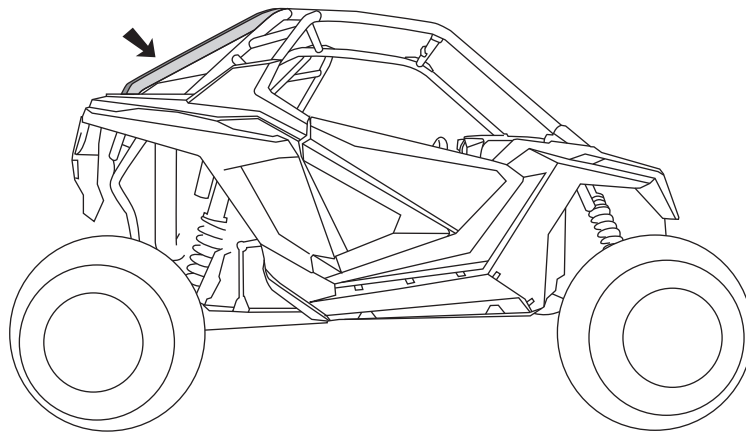
PRODUCT INFORMATION



① Tray-1	x1	⑧ M10 Flat Washer	x28	⑮ Supporting Bracket-L	x1
② Tray-2	x1	⑨ M10 Spring Washer	x24	⑯ Supporting Bracket-R	x1
③ Crossbar	x1	⑩ M10xL80 Screw	x2	⑰ Gas Strut	x1
④ Rotary Bracket	x2	⑪ M8xL20 Screw	x4	⑱ M10 Nut	x2
⑤ Reinforcing Sleeve	x2	⑫ M10xL35 Screw	x24	⑲ Metal Plate	x3
⑥ Rotary Sleeve	x2	⑬ Pipe Clamp-1	x4	⑳ Tie Down Strap	x2
⑦ M8 Nut	x10	⑭ Pipe Clamp-2	x2	㉑ M8xL16 Screw	x6

INSTALLATION TIPS

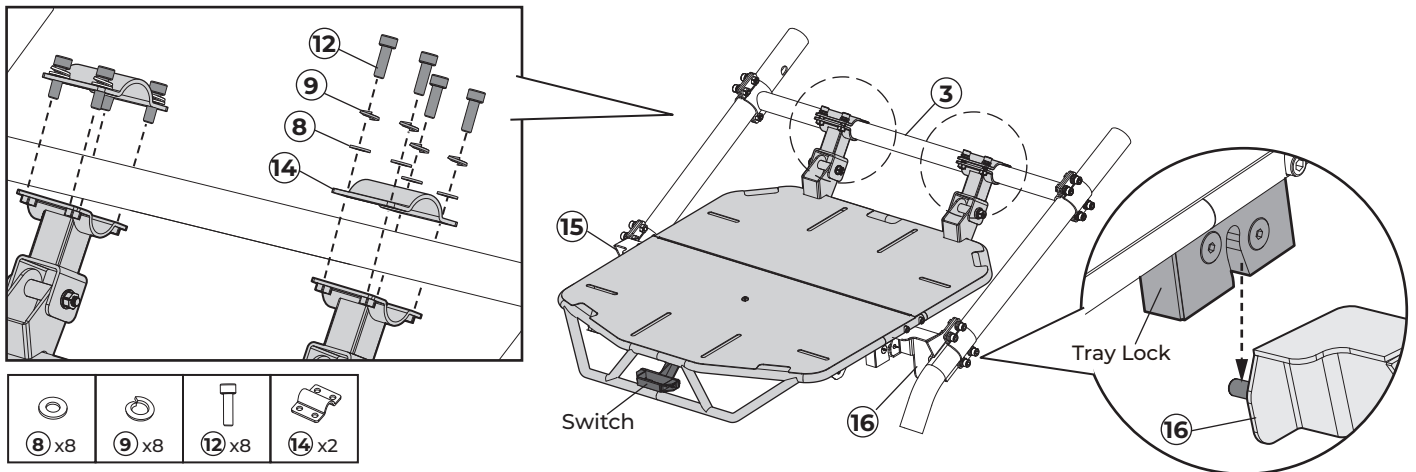




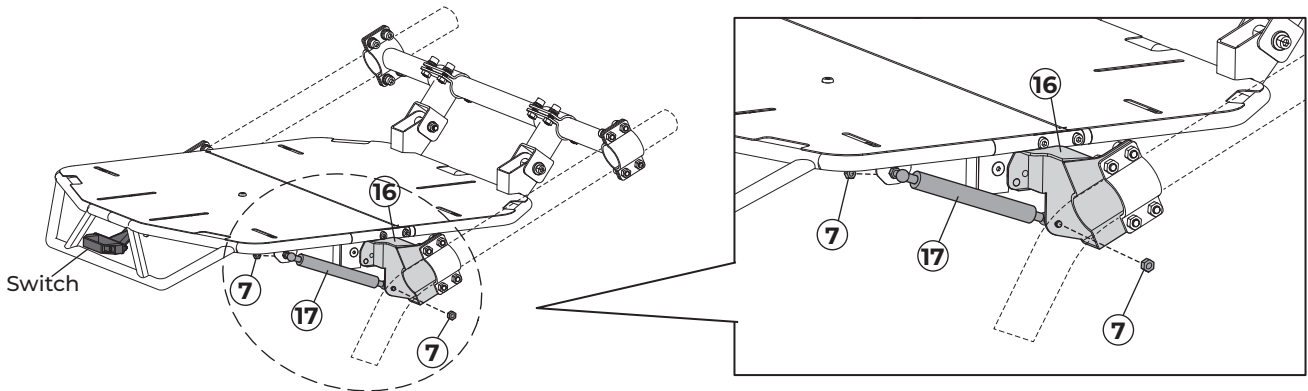
2020+ RZR Pro XP
2022+RZR Turbo R

3 Install crossbar [3] to vehicle rear roll cage with parts [8][9][12][13].
NOTE: Make sure the crossbar [3] is 35 mm away from the hole on roll cage.

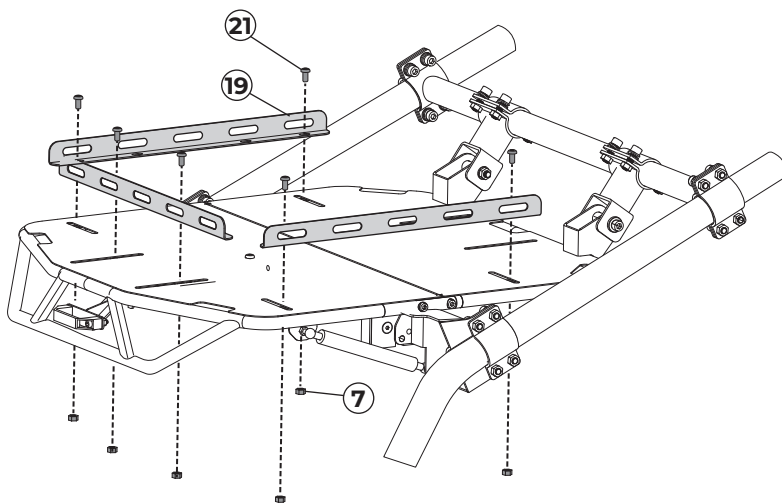
4 Install bracket-L [15] and bracket-R [16] to roll cage with parts [8][9][12][13].
NOTE:
- Make sure the bracket-L [15] and bracket-R [16] are 380±2 mm away from the crossbar [3].
- Make sure the bracket-L [15] and bracket-R [16] are on the same level.



5 Install the assembled tray to the crossbar [3] with parts [8][9][12][14].
NOTE: The pins of the bracket-L [15] and bracket-R [16] should stay in slots of the tray lock, so that the switch can be opened and closed smoothly without jamming.



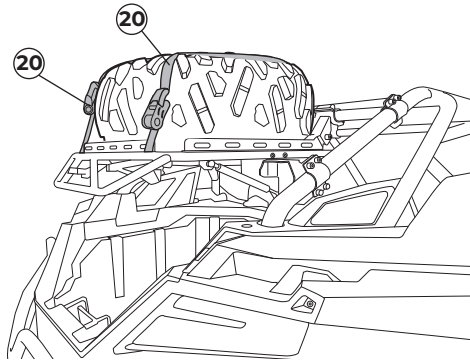
6 Install two gas struts [17] to assembled tray and parts [15][16] with four M8 nuts [7].
NOTE:
 - Make sure two ends of the gas struts [17] are locked tightly.
 - If the switch is jammed, you need to loosen the gas struts [17] and slightly adjust the position of the parts [15][16] to allow the switch to close smoothly.



7 Install three metal plates [19] to assembled tray with six M8 nuts [7] and M8xL16 screws [21].

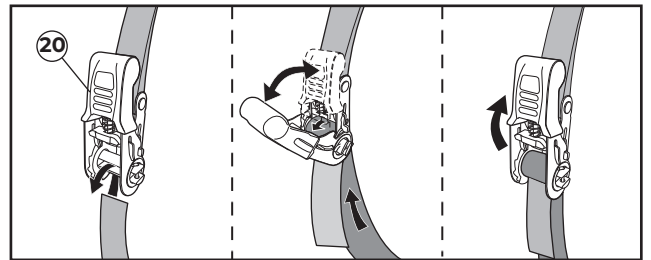
FUNCTION

Tie Down Strap

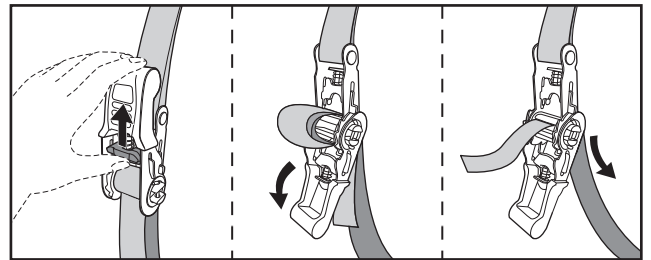


- **Lock:** Pass nylon strap through buckle, then lock it.
- **Unlock:** Pull down the buckle when pressing the button, then the nylon strap can be loosened

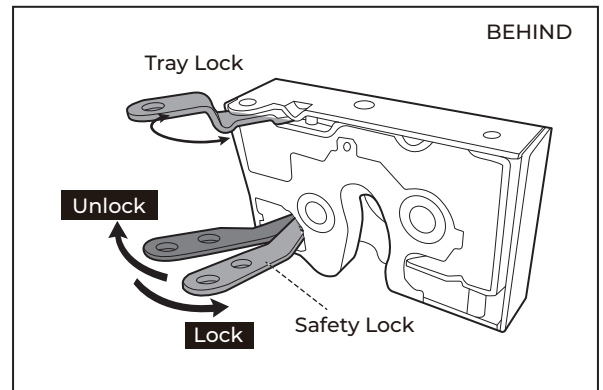
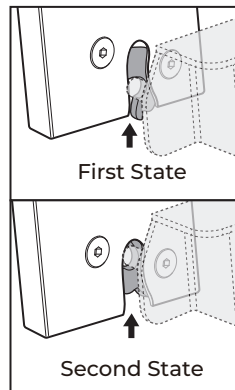
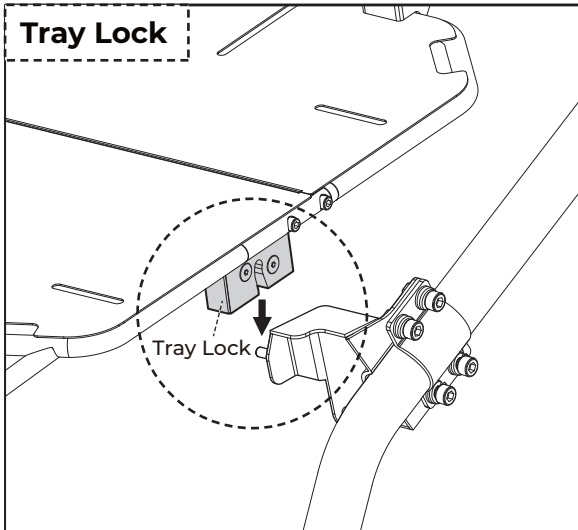
Lock



Unlock

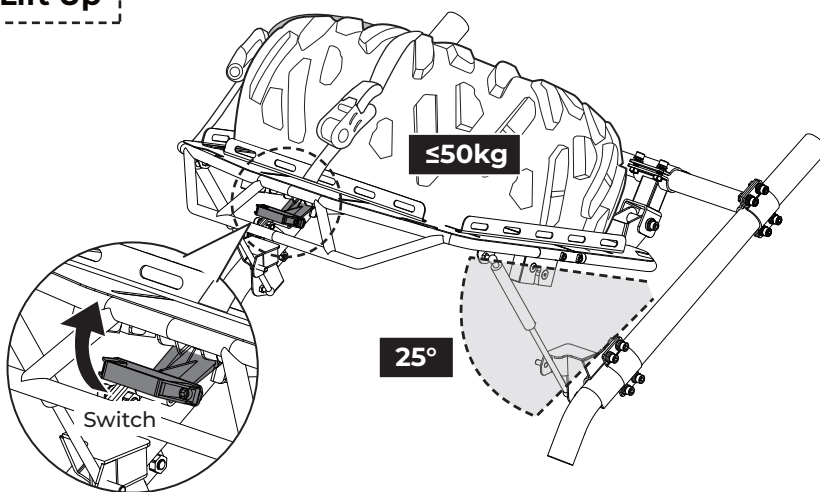


Tray Lock



- The tray lock has two lock states. Make sure the pin stay in the second lock state when the carrier is in use.
- There is a safety lock on the tray lock. When the safety lock is lock, the tray lock can not be unlocked.

Lift Up



- Press the switch and the carrier will raise 25°.
- Max Load: **50kg**
- Lifting Range: **25°**
- Max Size of Spare Tire: **34inch**

Q & A

- Q1:** The left and right heights of the carrier are inconsistent after installation.
- Make sure the crossbar [3] is 35 mm away from the hole on roll cage.
 - Make sure brackets [15][16] are the same distance from crossbar [3]. (380 mm±2 mm)
 - If the heights are still not consistent, remove two gas struts [17] and slightly adjust the position of rotary brackets [4] and pipe clamp-2 [14].
- Q2:** The switch is jammed after installation.
- Make sure two ends of the gas struts [17] are locked tightly.
 - Make sure the rotary brackets [4] and pipe clamp-2 [14] are locked tightly.
 - Loosen the gas struts [17] and slightly adjust the position of the brackets [15][16].
- Q3:** The switch can not work.
- Check if there is missing part in the connecting rod structure between the switch and the tray lock.
 - Check if the screws on connecting rod structure are screwed too tight.
 - Check if the safety lock is in unlock state.