

BEFORE YOU BEGIN

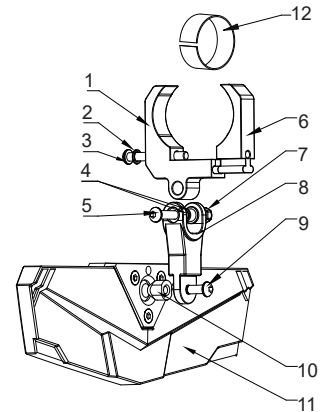
1. Read these instructions and check to be sure all parts and tools are accounted for.
2. Please retain these installation instructions for future reference and parts ordering information.

IMPORTANT

1. Please read the installation instructions carefully before you start.
2. If the vehicle is clean and free of other debris, it will be easy to install.
3. For your safety and to ensure a satisfactory installation, please complete all the installation steps in the order shown below.

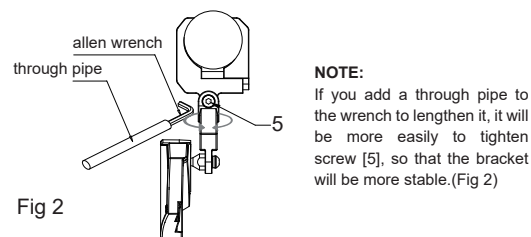
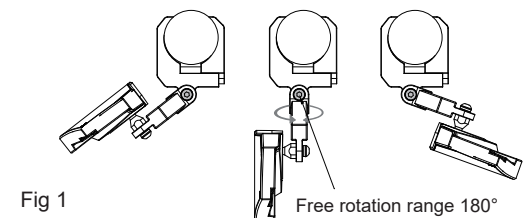
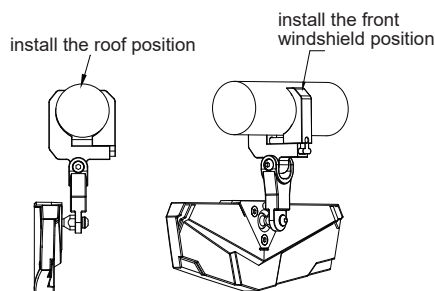
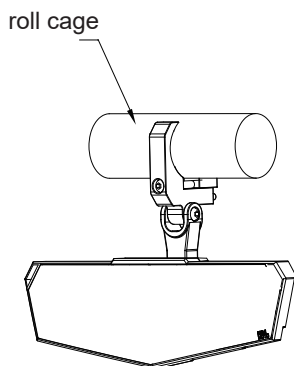
PRODUCT INFORMATION:

- | | | | |
|--------------------------------|----|---|----|
| 1. Pipe clamp-1 | x1 | 7. M6 lock nut | x1 |
| 2. M6 metal spring washer | x1 | 8. Y-bracket | x1 |
| 3. M6*L50 Hexagon socket screw | x1 | 9. M6*L12 round head hexagon socket screw | x1 |
| 4. T-shaped POM socket | x2 | 10. 304 stainless steel ball head | x1 |
| 5. M6*L30 Hexagon socket screw | x1 | 11. Rear view mirror | x1 |
| 6. Pipe clamp-2 | x1 | 12. Rubber sheets | x1 |



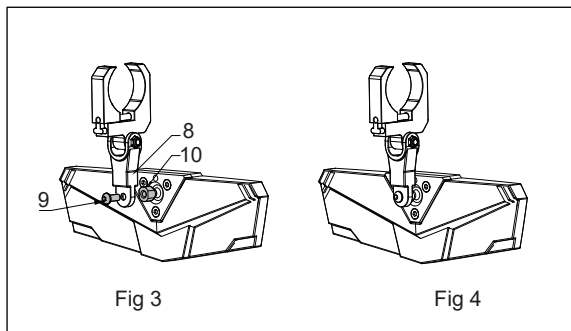
FUNCTION DESCRIPTION:

- 01** Fit 1.5 - 2.0 inches round pipe.
- 02** You can still install your front windshield and roof when our mirror is installed, which perfectly solves the problem that the three cannot coexist.
- 03** Loosen screw [5], the bracket of the mirror can be swung front and back, left and right. Tighten screw [5] after finishing adjustment.

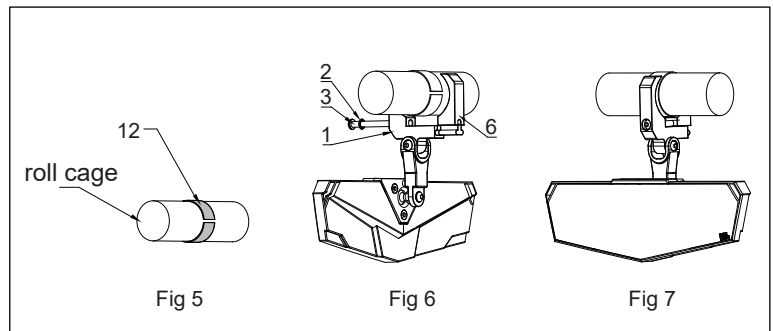


NOTE:
If you add a through pipe to the wrench to lengthen it, it will be more easily to tighten screw [5], so that the bracket will be more stable.(Fig 2)

INSTALLATION TIPS:



1. Assemble the mirror and the bracket by tightening screw [9] (Fig 3). The assembly is complete (Fig 4).



2. Wrap the rubber sheets [12] on the roll cage (Fig 5). Install the clamp [1] on the roll cage by tightening screw [3] (Fig 6). The assembly is complete (Fig 7).