

# PRODUCT MANUAL

SKU: B0111-01902BK

## BEFORE YOU BEGIN

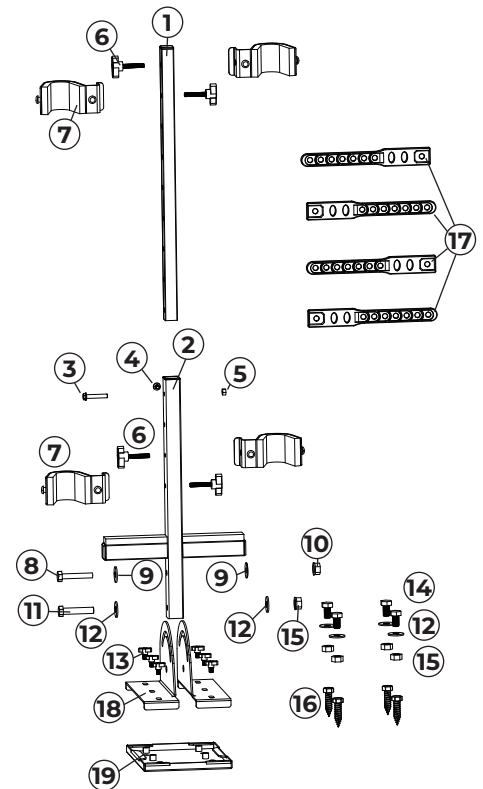
1. Read these instructions and check to be sure all parts and tools are accounted for.
2. Please retain these installation instructions for future reference and parts ordering information.

## IMPORTANT

1. Please read the installation instructions carefully before you start.
2. If the vehicle is clean and free of other debris, it will be easy to install.
3. For your safety and to ensure a satisfactory installation, please complete all the installation steps in the order shown below.

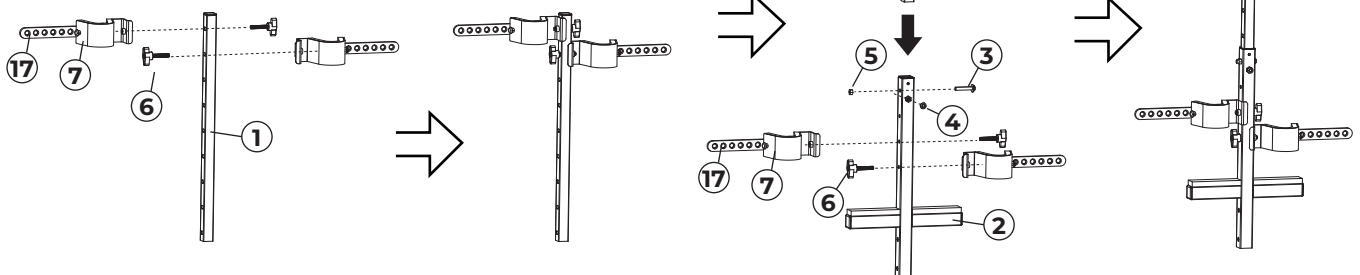
## PRODUCT INFORMATION

① Upper Tube	x1	⑪ M10xL50 Outer Hexagon Screw	x1
② Down Tube	x1	⑫ M10 Flat Washer	x6
③ M6xL35 Hexagon Flange Screw	x1	⑬ M6xL10 Plastic Thumb Screw	x6
④ M6xL10 Hexagon Socket Head Screw	x1	⑭ M10xL16 Outer Hexagon Screw	x4
⑤ M6 Lock Nut	x1	⑮ M10 Lock Nut	x5
⑥ M6xL35 Plastic Thumb Screws	x4	⑯ M10x45x1.5 Self-tapping Screw	x4
⑦ Fixed Bracket	x4	⑰ Rubber Strap	x4
⑧ M8xL50 Outer Hexagon Screw	x1	⑱ Base-A	x1
⑨ M8 Flat Washer	x2	⑲ Base-B	x1
⑩ M8 Lock Nut	x1		



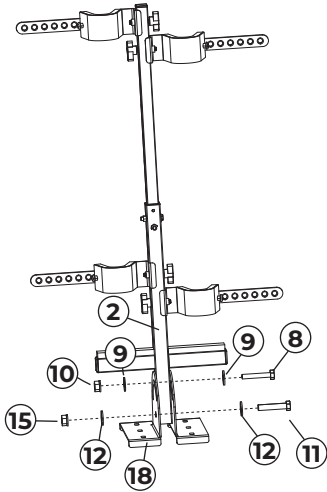
## INSTALLATION TIPS

1. Install fixed bracket [7] to tube [1][2] with M6xL35 thumb screw [6]. Assemble upper tube [1] and lower tube [2] with one M6xL35 screw [3], M6xL10 screw [4] and M6 nut [5] as shown.  
**NOTE:** According to the height of your tool, select a suitable mounting location for fixed bracket [7].



- 2** Assemble tube [2] and base-A [18] with parts [8][9][10][11][12][15] as shown.

NOTE: Loosen M8 screw [8], the tube can be swung front and back. Tighten the screw [8] after adjustment.

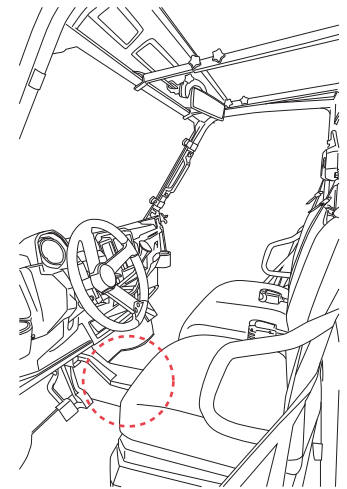
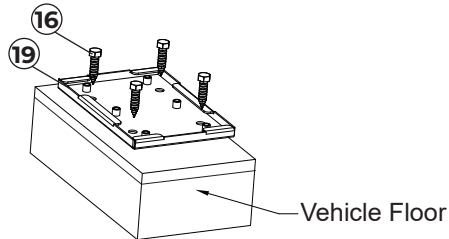


- 3** Install base-B [19] to vehicle floor.

**METHOD ONE**

Use an electric drill to secure the base-B [19] with four M10 self-tapping screws [16].

ATTENTION: Make sure there is no important unit under the floor you drill.

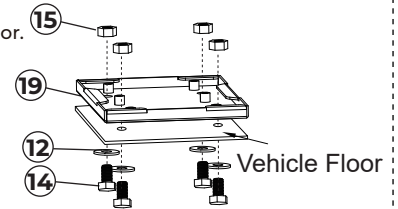


**METHOD TWO**

If your vehicle floor is removable, you can remove the floor.

Use base-B [19] as a guide, mark and drill four 10.5 mm holes on the floor.

Secure the base-B [19] to the floor with four M10xL16 screws [14], M10 washers [12] and M10 nuts [15].



- 4** Secure the base-A [18] to the base-B [19] with six M6xL10 thumb screws [13]. Finish installation.

